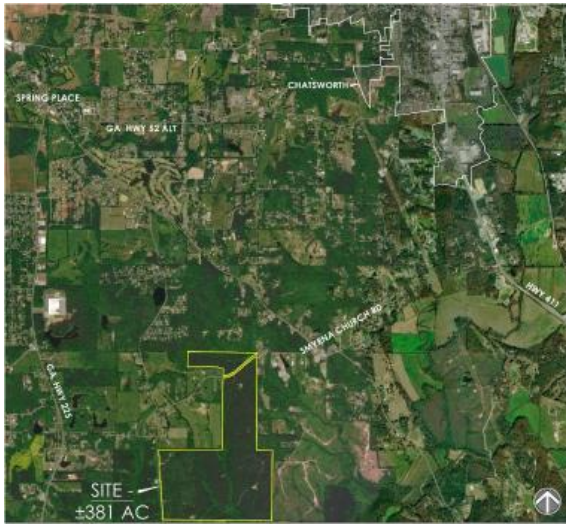


**Electric Cities of Georgia**

75 5th Street NW, Suite 850  
Atlanta, Georgia 30308

# Murray South Industrial Park

Industrial - Site



Murray County  
3800 Smyrna Church  
Chatsworth, GA 30705

For Sale or Lease

Sale/Lease Price



## Detail

<b>Subtype:</b> Site	<b>Total Acreage:</b> 378.3	<b>Avail Acreage:</b> 378.3	<b>Largest Tract:</b> 90
<b>GRAD:</b> Yes	<b>Current Zoning:</b> Industrial	<b>Rail Available:</b> No	<b>Rail Siding:</b> No
<b>Environ Ph1:</b> Yes	<b>Wetland Del:</b> Yes		

## Utilities

<b>Electric Provider:</b> North Georgia EMC	<b>Sewer Size:</b> 8" Main	<b>Water Size:</b> 8" Main
--	-------------------------------	-------------------------------

## Transportation

Type	Name	Distance (mi)	Description
Airport	Hartsfield-Jackson Atlanta	76.7	
Highway	Interstate 75	11	
Port	Savannah Port	293.1	Container port
Intermodal	Appalachian Regional Inland Port	14.8	

## Additional Information

**Zoning Advantages:** Job Tax Credit - Tier 1/\$4,000 (2019)

Park is located in unincorporated Murray County, approximately three miles south-southwest of downtown Chatsworth. Smyrna Church Road provides primary access to the park.

## Murray South Industrial Park



*Information presented is obtained from sources deemed reliable. We assume no liability of errors, omissions or modifications.*