





VISION

A regenerative economy, responsible resource use and social equity through a healthy built environment for all.

ADAPTING YOUR ORDINANCES AND APPROACHES TO ATTRACT 21ST CENTURY TALENT



SOUTHFACE'S MUNICIPAL WORK - INDUSTRIAL

Helping LaGrange attract new businesses and 21st century talent through our work on the Georgia International Business Park (GIBP)



The City of LaGrange - one of the most successful business cities in the Southeast.

SOUTHFACE'S MUNICIPAL WORK - INDUSTRIAL

GIBP SCOPE

- Resident-focused sustainability programs
- Reporting framework
- An engaged community



SOUTHFACE'S WORK IN WEST LAFAYETTE

West LaFayette Transformation Plan



WEST LAFAYETTE TRANSFORMATION PLAN

West LaFayette Transformation Plan

In partnership with the City of LaFayette, Rea Ventures Group, LLC and Village Habitat Design



WEST LAFAYETTE TRANSFORMATION PLAN

- Capitalize on pending development
- Spur redevelopment
- Link resources



WEST LAFAYETTE TRANSFORMATION PLAN

HOUSING AND DEVELOPMENT CONCEPTS

- Quadraplex apartments
- Retail developments
- Health care access
- Innovative concepts



WEST LAFAYETTE TRANSFORMATION PLAN

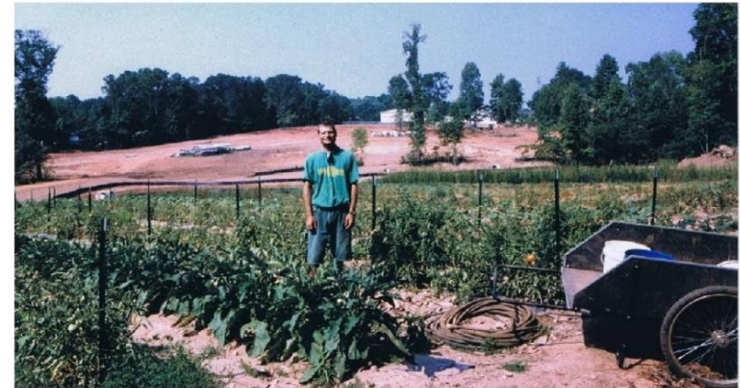
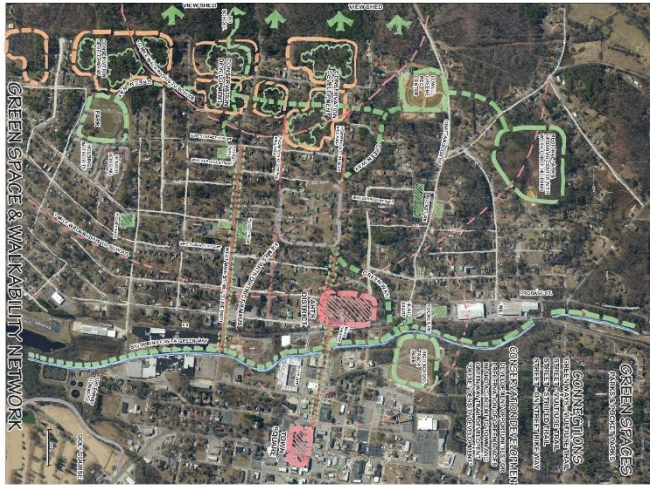
CHARRETTE

- Management
 - City Manager/Mayor
 - Developer
- Revitalization Committee
 - Council member
 - Community leaders
- Stakeholders



WEST LAFAYETTE TRANSFORMATION PLAN

- Initial Kick-off Meeting
- Visual Preference Survey
- Online survey
- Brainstorming Session



FARM IS INSTALLED BEFORE VILLAGE



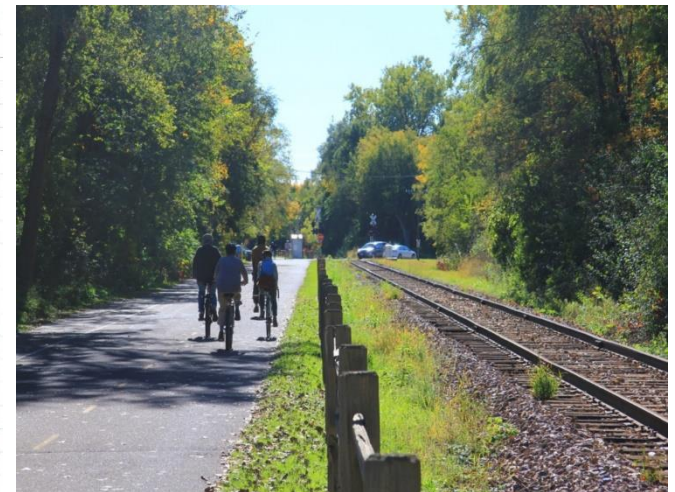
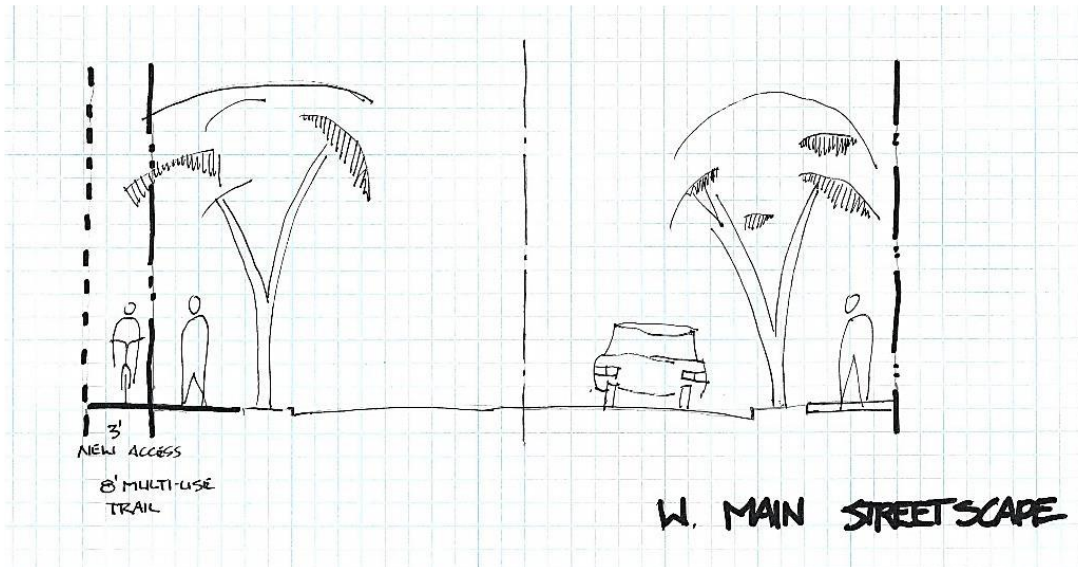
VILLAGE DEVELOPED AFTER FARM

EAST LAKE COMMONS - FARM/VILLAGE
RYAN COHEN - FIRST FARMER

WEST LAFAYETTE TRANSFORMATION PLAN

OUTCOMES

- Architectural Design Guideline
- Streetscapes
- Trail Network



ZONING IS THE WIRE MONKEY



LAGRANGE

On-bill tariffed low-income energy efficiency program



THANK YOU!

Robert Reed
Senior Director, Southface
241 Pine Street NE
Atlanta, GA 30308
rreed@southface.org
404-604-3661

