

Population Projections – Wilkes County, Georgia

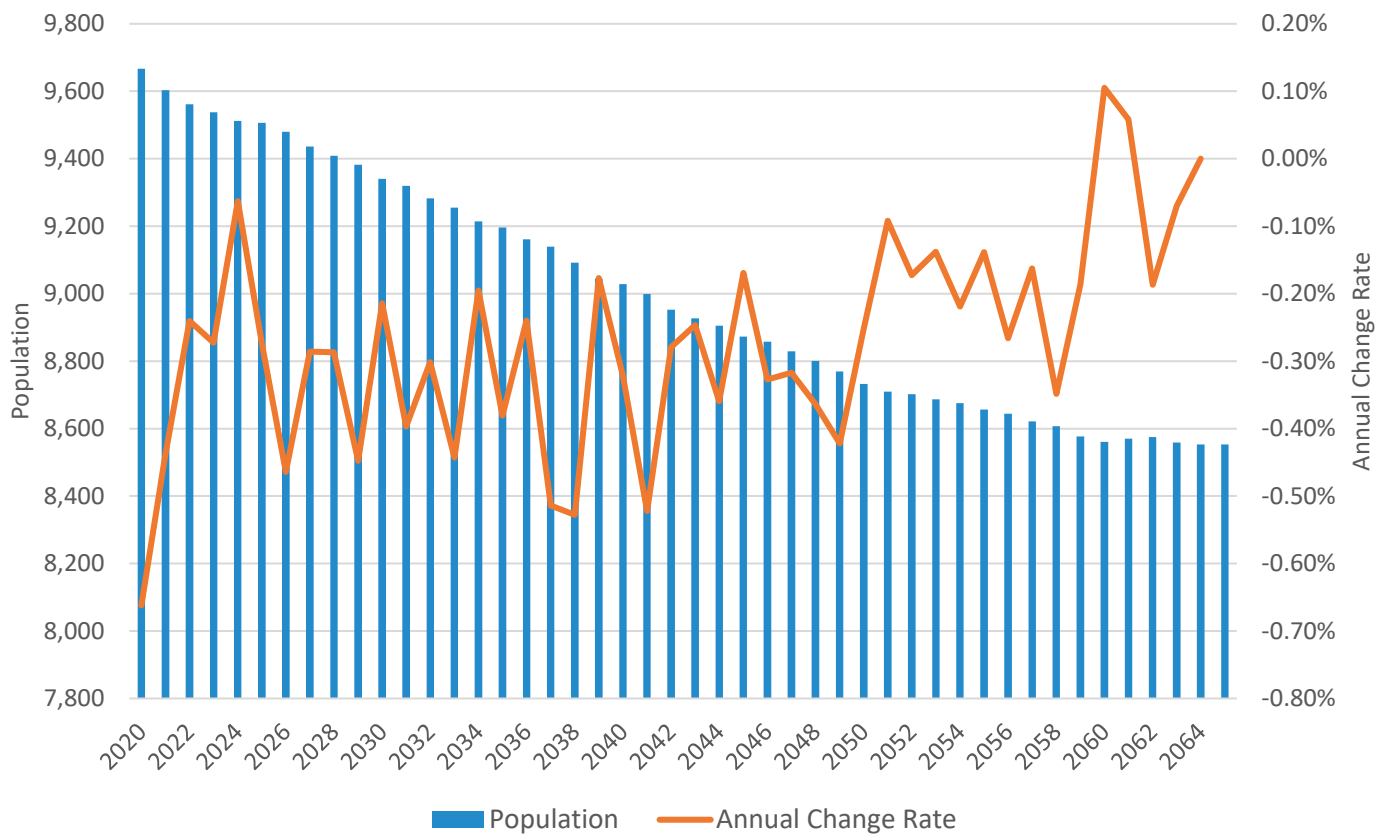
Year	Total Population		Male		Female	
	Population	Annual Change	No.	%	No.	%
2020	9,667	--	4,665	48.3%	5,002	51.7%
2021	9,603	-0.66%	4,661	48.5%	4,942	51.5%
2022	9,561	-0.44%	4,661	48.8%	4,900	51.2%
2023	9,538	-0.24%	4,660	48.9%	4,878	51.1%
2024	9,512	-0.27%	4,656	48.9%	4,856	51.1%
2025	9,506	-0.06%	4,662	49.0%	4,844	51.0%
2026	9,480	-0.27%	4,656	49.1%	4,824	50.9%
2027	9,436	-0.46%	4,629	49.1%	4,807	50.9%
2028	9,409	-0.29%	4,619	49.1%	4,790	50.9%
2029	9,382	-0.29%	4,614	49.2%	4,768	50.8%
2030	9,340	-0.45%	4,592	49.2%	4,748	50.8%
2031	9,320	-0.21%	4,587	49.2%	4,733	50.8%
2032	9,283	-0.40%	4,570	49.2%	4,713	50.8%
2033	9,255	-0.30%	4,564	49.3%	4,691	50.7%
2034	9,214	-0.44%	4,543	49.3%	4,671	50.7%
2035	9,196	-0.20%	4,535	49.3%	4,661	50.7%
2036	9,161	-0.38%	4,520	49.3%	4,641	50.7%
2037	9,139	-0.24%	4,515	49.4%	4,624	50.6%
2038	9,092	-0.51%	4,492	49.4%	4,600	50.6%
2039	9,044	-0.53%	4,473	49.5%	4,571	50.5%
2040	9,028	-0.18%	4,471	49.5%	4,557	50.5%
2041	8,999	-0.32%	4,462	49.6%	4,537	50.4%
2042	8,952	-0.52%	4,437	49.6%	4,515	50.4%
2043	8,927	-0.28%	4,435	49.7%	4,492	50.3%
2044	8,905	-0.25%	4,432	49.8%	4,473	50.2%
2045	8,873	-0.36%	4,415	49.8%	4,458	50.2%
2046	8,858	-0.17%	4,413	49.8%	4,445	50.2%
2047	8,829	-0.33%	4,406	49.9%	4,423	50.1%
2048	8,801	-0.32%	4,391	49.9%	4,410	50.1%
2049	8,769	-0.36%	4,382	50.0%	4,387	50.0%
2050	8,732	-0.42%	4,370	50.0%	4,362	50.0%
2051	8,710	-0.25%	4,359	50.0%	4,351	50.0%
2052	8,702	-0.09%	4,362	50.1%	4,340	49.9%
2053	8,687	-0.17%	4,363	50.2%	4,324	49.8%
2054	8,675	-0.14%	4,365	50.3%	4,310	49.7%
2055	8,656	-0.22%	4,355	50.3%	4,301	49.7%
2056	8,644	-0.14%	4,349	50.3%	4,295	49.7%
2057	8,621	-0.27%	4,343	50.4%	4,278	49.6%
2058	8,607	-0.16%	4,347	50.5%	4,260	49.5%
2059	8,577	-0.35%	4,335	50.5%	4,242	49.5%
2060	8,561	-0.19%	4,336	50.6%	4,225	49.4%
2061	8,570	0.11%	4,343	50.7%	4,227	49.3%
2062	8,575	0.06%	4,356	50.8%	4,219	49.2%
2063	8,559	-0.19%	4,368	51.0%	4,191	49.0%
2064	8,553	-0.07%	4,383	51.2%	4,170	48.8%
2065	8,553	0.00%	4,388	51.3%	4,165	48.7%

Source: Governor's Office of Planning and Budget, Series 2020

Disclaimer: This data is provided for informational purposes only without warranty or guarantee of any kind.

Population Projections – Wilkes County, Georgia

Wilkes County, Georgia
Population and Annual Change Rate



Source: Governor's Office of Planning and Budget, Series 2020

Disclaimer: This data is provided for informational purposes only without warranty or guarantee of any kind.

Methodology Note: These projections were prepared by the Georgia Governor's Office of Planning and Budget using the standard cohort component demographic methodology, relying upon recent historical fertility, migration, and age data. Year-by-year projections for the state are available through the year 2065. These projections include state and county level projections by age, sex, and race using baseline data from the Census Bureau's vintage 2019 Population Estimates. For a more detailed explanation of the methodology used for these projections, please visit <https://opb.georgia.gov/census-data/population-projections>.