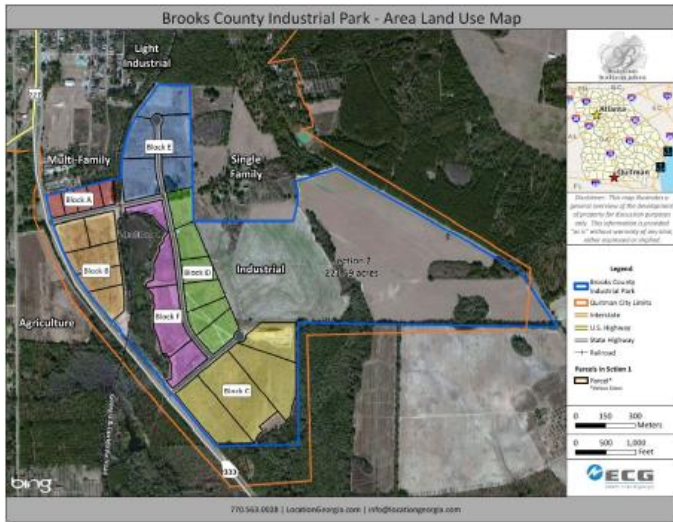


# Brooks County Industrial Park

## Industrial - Site



Brooks County  
GA-333  
Quitman, GA 31643

For Sale or Lease  
**For Sale or Lease**  
Sale/Lease Price



## Detail

<b>Subtype:</b> Site	<b>Total Acreage:</b> 250	<b>Avail Acreage:</b> 196	<b>Largest Tract:</b> 221.7
<b>Smallest Tract:</b> 2	<b>GRAD:</b> Yes	<b>In City Limits:</b> Yes	<b>Current Zoning:</b> Heavy Industrial
<b>Land Use North:</b> Residential/Agricultural	<b>Land Use South:</b> Agricultural/Forestry	<b>Land Use East:</b> Residential/Agricultural	<b>Land Use West:</b> Residential/Agricultural
<b>Dev Stage:</b> Industrial Site	<b>Rail Available:</b> Yes	<b>Rail Siding:</b> No	<b>Rail Provider:</b> Georgia & Florida Railway
<b>Environ Ph1:</b> Yes	<b>Ph1 Cult &amp; End:</b> Yes	<b>Wetland Del:</b> Yes	<b>Ph1 Soils:</b> Yes
<b>Covenants:</b> Yes	<b>Ownership:</b> Public		

## Utilities

<b>Fire Rating:</b> 4	<b>Police Protection:</b> City	<b>Fire Protection:</b> City	<b>Telecommunications:</b> Alltel / City of Quitman wireless DSL
<b>Electric Provider:</b> Customer Choice @ 900 kW	<b>Sewer Provider:</b> Quitman LAS	<b>Water Provider:</b> City of Quitman	<b>Gas Provider:</b> City of Quitman
<b>Sewer Size:</b> 8" Main	<b>Water Size:</b> 12" Main	<b>Gas Size:</b> 4" Main	

## Transportation

Type	Name	Distance (mi)	Description
Interstate	75	14	
Interstate	10	24	

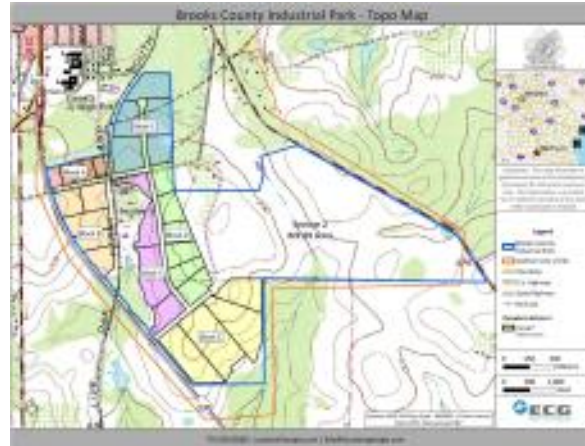
## Brooks County Industrial Park

Highway	US 221	.3	
Highway	US 84	1	4 Land Divided Highway
Airport	Valdosta Regional	20	8,002 ft runway
Airport	Quitman/Brooks County	3.6	5,000 ft runway
Highway	GA 333	0	Direct Access
Airport	Jacksonville International Airport	115	Commercial Air Service; 10,000
Intermodal	Jacksonville, FL	118	
Port	Bainbride - Barge	62	
Intermodal	Brunswick - Col. Is.	134	Sea Port

## Additional Information

**Zoning Advantages:** Job Tax Credit - Tier 2/\$3,000 (2015), Less Developed Census Tract (2011), Opportunity Zone (2013), Job Tax Credit - Tier 2/\$3,000 (2015)

The Brooks County Development Authority will work with prospect on building and land. All 203 acres of park are available for rail siding with Georgia Florida Railroad which has connectivity to CSX and Norfolk Southern. 221 additional acres are available for expansion of park as needed.



*Information presented is obtained from sources deemed reliable. We assume no liability of errors, omissions or modifications.*