

# “A Proactive Approach in a Reactive Economy”



JoAnne Lewis  
Executive Director  
Douglas-Coffee County  
Chamber of Commerce &  
Economic Development Authority

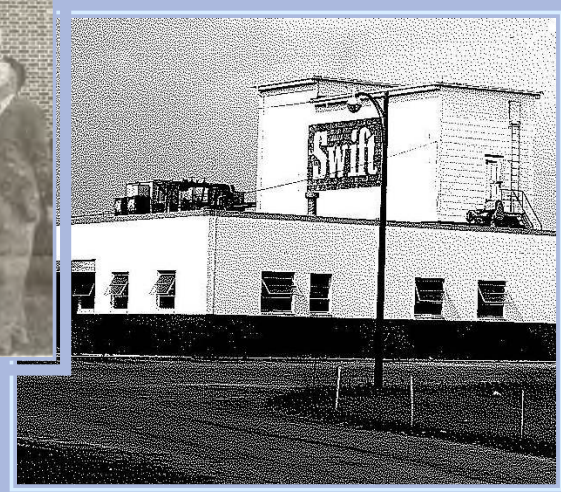
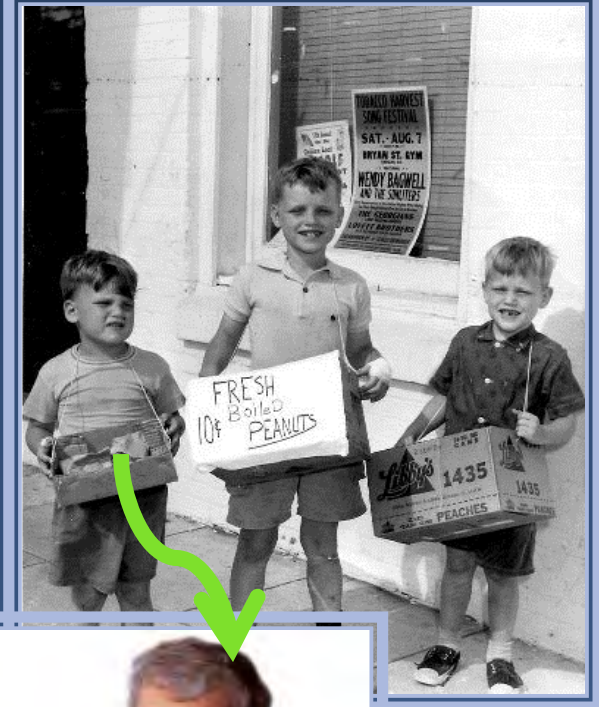
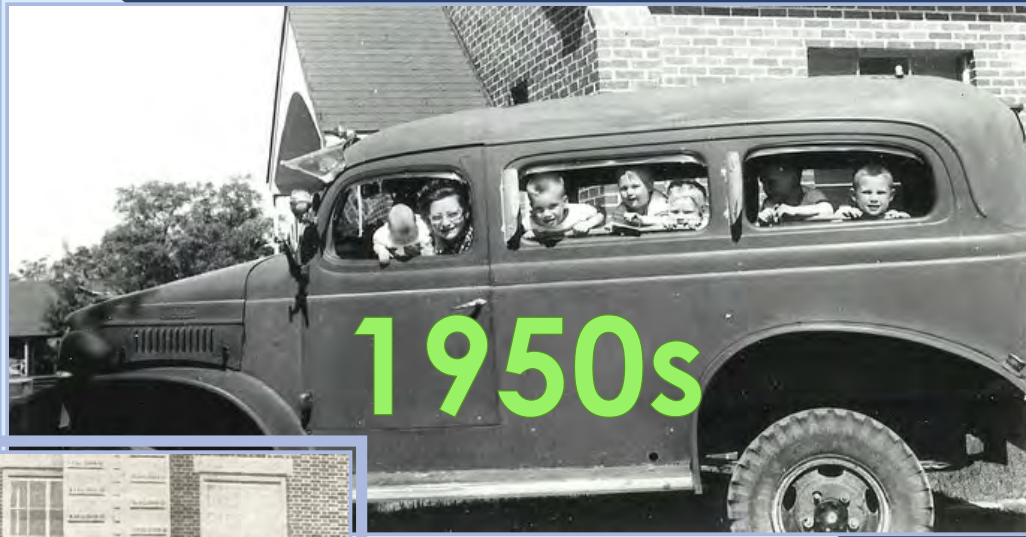
Slide 1

---

J1

Joanne, 3/25/2013

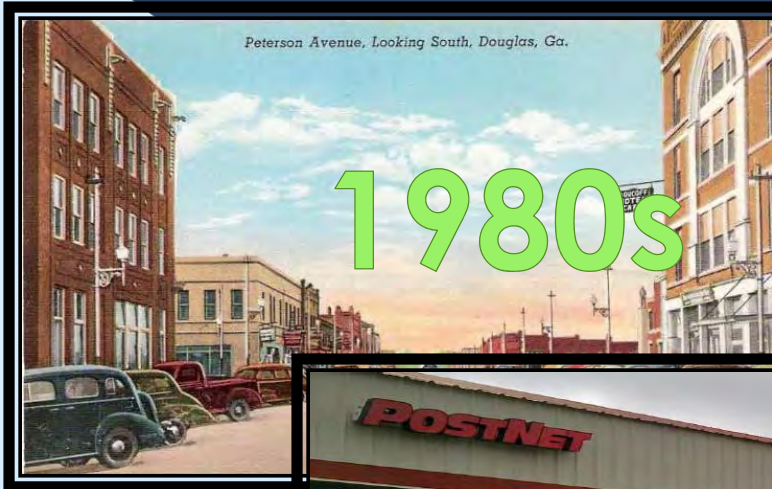
# “A Proactive Approach in a Reactive Economy”



# “A Proactive Approach in a Reactive Economy”



# “A Proactive Approach in a Reactive Economy”



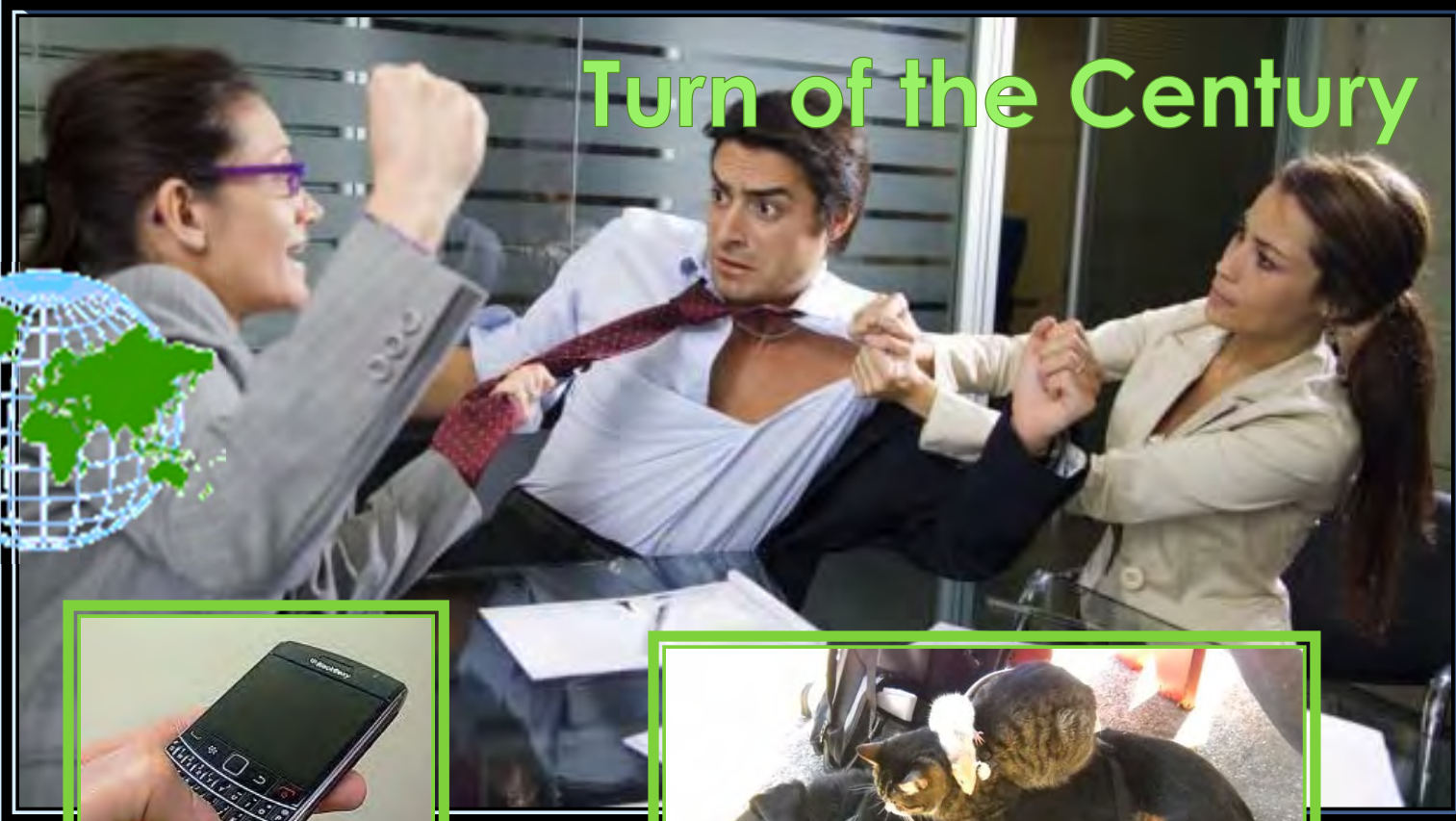
MAINSTREET

# “A Proactive Approach in a Reactive Economy”



# “A Proactive Approach in a Reactive Economy”

## Turn of the Century



Douglas-Coffee County IDA  
dba Douglas-Coffee EDA

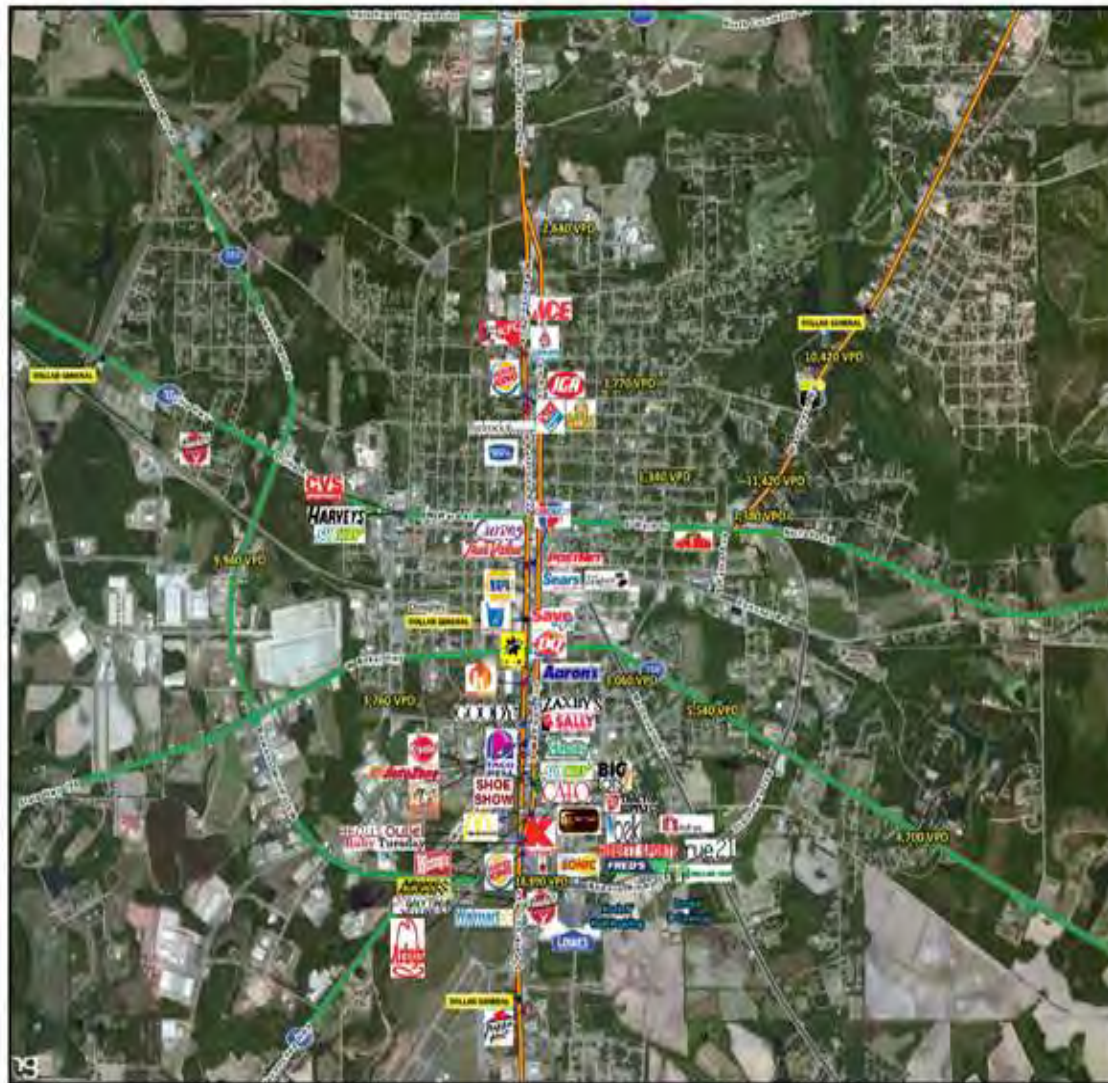
# “A Proactive Approach in a Reactive Economy”



# “A Proactive Approach in a Reactive Economy”



# “A Proactive Approach in a Reactive Economy”



## Retail Overview Douglas, GA

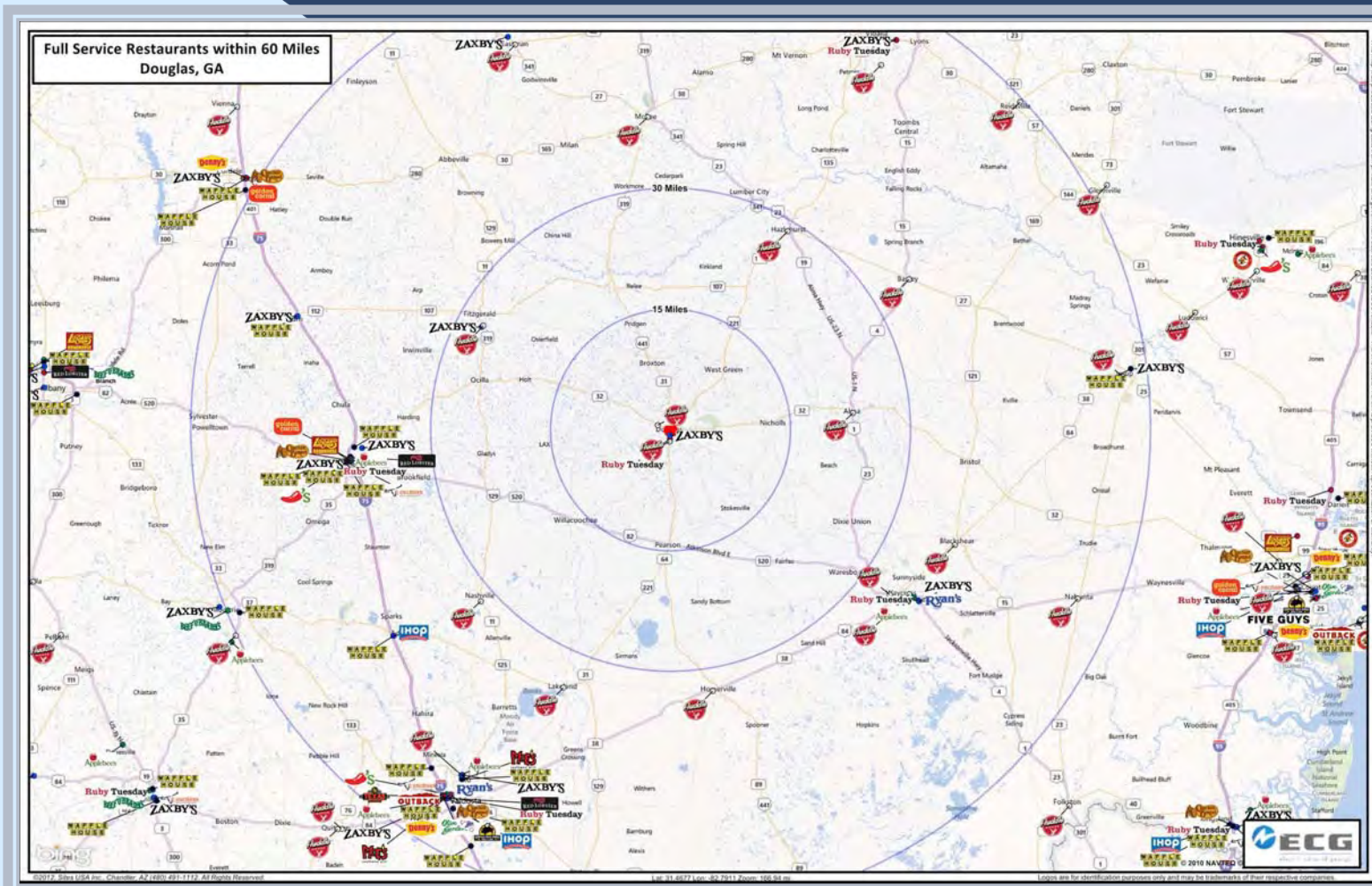


Demographics	1 Mile	5 Mile	10 Mile
Population	11,300	19,273	32,199
Avg. HH Income	\$40,401	\$42,706	\$43,989
Median Age	33.2	33.4	33.8
Households	4,218	7,100	11,623
Daytime Emp.	8,408	12,849	13,863

Demographics	5 Min	10 Min	15 Min
Population	12,826	23,714	43,567
Avg. HH Income	\$41,087	\$42,858	\$46,206
Median Age	33.6	33.5	34.1
Households	4,795	8,662	15,508
Daytime Emp.	8,850	12,998	15,324



# “A Proactive Approach in a Reactive Economy”



# “A Proactive Approach in a Reactive Economy”



JoAnne Lewis  
Executive Director  
Douglas-Coffee County  
Chamber of Commerce &  
Economic Development Authority