

Electric Cities of Georgia

75 5th Street NW, Suite 850
Atlanta, Georgia 30308

University Research Park

Industrial - Site



Barrow County
1500 Doc McLocklin Rd
Statham, GA 30666

For Sale or Lease

For Sale

Sale/Lease Price

\$65,000/Acre



Detail

Subtype: Site	Total Acreage: 102	Avail Acreage: 78.15	Largest Tract: 78.15
Smallest Tract: 7.96	GRAD: Yes	In City Limits: Yes	Current Zoning: CH & M1
Land Use North: Light Industrial	Land Use South: Agricultural	Land Use East: Mixed Use	Land Use West: Mixed Use
Dev Stage: Cleared & Graded	Rail Available: No	Rail Siding: No	Environ Ph1: Yes
Ph1 Cult & End: Yes	Wetland Del: Yes	Ph1 Soils: Yes	Covenants: Yes
Ownership: Private			

Utilities

Fire Rating: 7	Fire Protection: County	Telecommunications: DSL Fiber Optic Lines	Electric Provider: Jackson EMC
Sewer Provider: Barrow County	Water Provider: City of Statham	Gas Provider: Atlanta Gas Light Company	Sewer Size: 8" Main
Water Size: 8" & 24"	Gas Size: 6" Main		

Transportation

Type	Name	Distance (mi)	Description
Interstate	85	17	
Highway	GA 316	0	Adjacent

University Research Park

Highway	US 29	0	Adjacent
Airport	Athens/Ben Epps	18	5,522 ft runway
Airport	Hartsfield-Jackson Atlanta	51	
Airport	Winder	4	5,500 ft runway
Intermodal	Tilford CSX/NS Intermodal Facility	53	Intermodal Facility
Port	Savannah	230	Container port

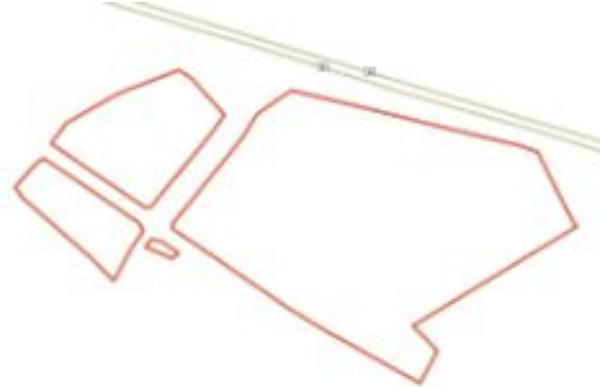
Places

Type	Name	Distance (mi)	Description
College/University	Lanier Technical College	7	
College/University	University of Georgia	13	

Additional Information

Zoning Advantages: GRAD Site, Job Tax Credit - Tier 1/\$4,000 (2017), 100% Freeport

A three-tract site containing a total of 102.22 acres with Tract One being 78.15 acres, Tract Two 16.11 acres, and Tract Three 7.96 acres. The tracts have been mostly cleared and graded.



Information presented is obtained from sources deemed reliable. We assume no liability of errors, omissions or modifications.